

Garden Base 1:24/1:12 scale base 3½" dia x 1 3/16" tall. Create a garden design or fill with Magic Water, add an MBS fountain (FTNS-48 not included) for a beautiful water feature.
#GDF-24 \$8.95



Garden Kit. Same as above in kit form, includes base, foliage, growies and a pine tree, as shown
#KIT-GDF24 \$15.70

Vine on wire trellis 1:24 is 4" tall and 1:48 is 2" tall.
 Colors: Red, Green, Yellow or Fuchsia (state color)
#VINE-24 () \$5.95 **#VINE-48** () \$4.25



Garden Growies Packs Flowery loose blossoms mixed in with greenery, all in one pack. Makes planting a garden so much easier.

3 bags: 1 of each color (2"x3" ea.) \$4.23

Blue, white & pink **#BLGR-MX1**

Pink, Yellow & Violet **#BLGR-MX2**

Purple, Marigold & Red **#BLGR-MX3**

Red, orange & wild (mix) **#BLGR-MX4**



Garden Growies Same as above. Singles. Each bag covers approx. 13 square inches. Great for any scale. For finer growies, toss them into a coffee/spice grinder.
 2"x3" bag **#GG-** () state colour code \$1.40ea.



Blue	Purple	Fuchsia	Marigold	Orange	Red	Violet	White	Wild	Yellow
BL	DP	FP	MG	OR	RD	VL	WT	WLD	YL

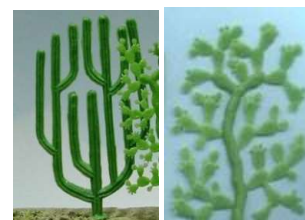
Garden Delight Beds -lightweight earthy bed with mixed colored flowers

1:24 scale - 3 1/4"L x 1 3/8"W x 3/4"H **#GDB-243** \$7.95

1:48 scale - 1 7/8"L x 5/8"W x 3/8"H **#GDB-483** \$4.60



Cactus These cactus can be re-shaped with heat and can be flocked with our grasses for more realism. Cut apart to create smaller plants
 Saguaro 1-1/4" tall 6/pk **#CACS-25** \$6.95
 Saguaro 4" tall 1/pk **#CACS-95** \$4.99 4-1/2" tall 1/pk **#CACS-105** \$6.95



Prickly Pear 1:87 4/pk **#CACP-25** \$4.66 1:48 2/pk **#CACP-80** \$4.66
 Prickly Pear 1:24 1/pk **#CACP-105** \$4.66 these come as a cluster and can be separated

CACS

CACP

Mini Squeeze Me Bushes

Same as our famous larger scale bushes.
Perfect for railroad scales.

5pc per pk.*

*Except - T-121A,T-121B,T-121C, T-121D
T-121DD which have 3pc per pk.

1/4" & 1/2" \$4.73/pk 3/4" & 1" \$4.99/pk

'A' round style

#T-1225A 1/4" dia

#T-125A 1/2" dia

#T-1275A 3/4" dia

#T-121A 1" * dia

'B' Egg Shape

#T-125B 1/2" tall

#T-1275B 3/4" tall

#T-121B * 1" tall

'C' Mound Style

#T-125C 1/2" dia

#T-1275C 3/4" dia

#T-121C * 1" dia

'D' Pine Style

#T-1275D 3/4" tall

#T-121D * 1" tall

#T-121DD * 1" tall fat not shown



Flowering mini bushes and Hedges – same as above but with flowers



'C' mound style flowering bushes in 1/2" & 3/4"

Colors: Wild, Red, Blue, Yellow, Violet, White & Pink

1/2" Code: T-5C() \$4.73/5 3/4" Code: T-7C() \$4.99/5

State color in brackets



Hedges 12" long with flowers

Colors: Yellow, Violet, White & Pink

1/4"x3/16"x12" Code: HEDG-8() \$4.77

3/8"x1/4"x12" Code: HEDG-16() \$4.77

5/8"x3/8"x12" Code: HEDG-24() \$5.95

Size does Matter- TREES ARE BIG

Choose tree sizes that are appropriate for the scale you are working in. Different size trees can be put on one model in one scale. For that reason, we do not label scales on our trees. Example: a 4" tree would be: 8' in 1:24 16' in 1:48 28' in HO and 52' in N scale.



Ash trees – Rich green foliage with textured trunk.

TASH-3 3" 4/pk \$12.95

TASH-5 5" 2/pk \$10.95

Tree Frames 2"- 6.5" Tall

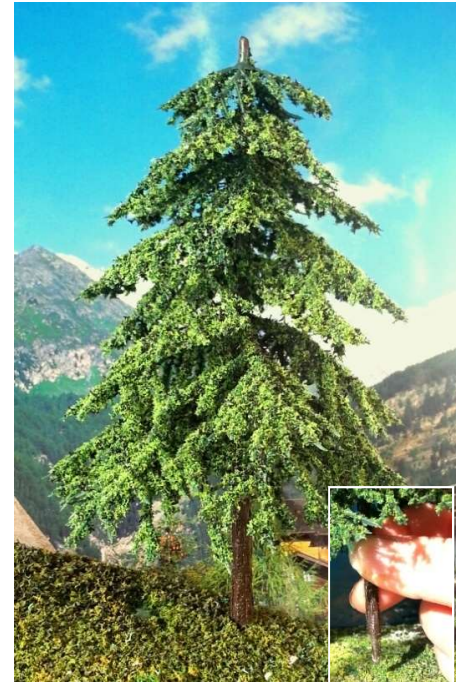
No bending required, easy to apply #4 MBS foliage for a realistic look as shown here >

TAC-2 2" 12pc \$ 7.99

TAC-3 3" 12pc \$ 8.99

TAC-4 4" 12pc \$11.95

TAC-65 5.5&6.5" 6pc \$14.95



Fir Tree – 6" tall. 4" wide

Has a peg for easy planting

#TFIR-17 2/pk \$11.95

Bulk pricing on request

Pre-made trees – These trees can be used for many scales by cutting the stem down. From a Large old Oak tree in a small scale to a tall young Ash tree in a larger scale. All 6" tall and come 2 per pack **#TRAP-14FG&LG \$13.95**



#TRAP-14FG Forest green



#TRAP-14BL Apple blossom \$14.95



#TRAP-14LG Linden green

Pre-made trees - Blossom trees 6" tall – 4 1/2" wide
3/8" dia trunk with a planting peg. **2 per pack \$19.95 Green \$18.95/2**



#TRAP-16G 2 green trees #TRAP-16GB 1 of ea. #TRAP-16BL 2 blossom trees

Tree Stands- for 2-8" trees

Designed for MBS tree frames #TA, but can be used for any tree with a planting peg

2-4" 6pc 1 1/4" base **#TRST-4 \$3.50**

6" 4pc 1 3/4" base **#TRST-6 \$3.50**

8" 4pc 2 1/4" base **#TRST-8 \$3.50**

Add a metal washer underneath for weight



Pre-made Blossom trees

Cherry, Crab Apple & Almond

2-1/4" (#2) & 3" (#3) tall trees.

All have a planting peg.

#TRB-2CB Cherry Blossom 4/\$10.50

#TRB-2CA Crab Apple 4/\$10.50

#TRB-2FA Flwrng. Almond 4/\$10.50

#TRB-3CB Cherry Blossom 3/\$ 10.50

#TRB-3CA Crab Apple 3/\$ 10.50

#TRB-3FA Flwrng. Almond 3/\$ 10.50

#TRE-2CB Cherry Blossom 6/\$15.95

#TRE-3CB Cherry Blossom 6/\$17.25



#TRB-2CB & 3CB



#TRB-2CA & 3CA



#TRB-2FA & 3FA



#TRE-2CB & 3CB

Tree Foliage mat Approx. 7x8" 1/4"-3/8" thick.
Suitable for foliage on our bendable tree armatures
6 & 8" tall. (TA-6 & TA-8)

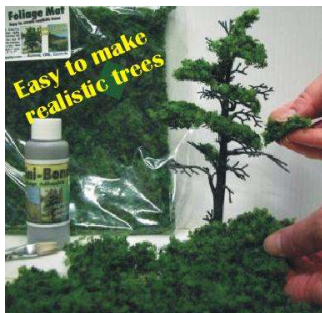
Spread MBS Mini-Bond on top of branches then tear off pieces of the mat and place on branches. These can also be used for bushes and mass planting on hillsides etc. Use Minibond or hot glue for ground planting. Flexible, non-fading, won't dry out.
\$9.95ea



Autumn Mix
#FM-AM



Red Maple
#FM-RM



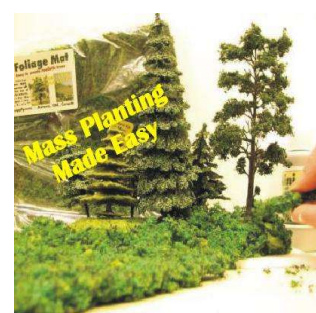
Forest Green 2 tone
#FM-FG



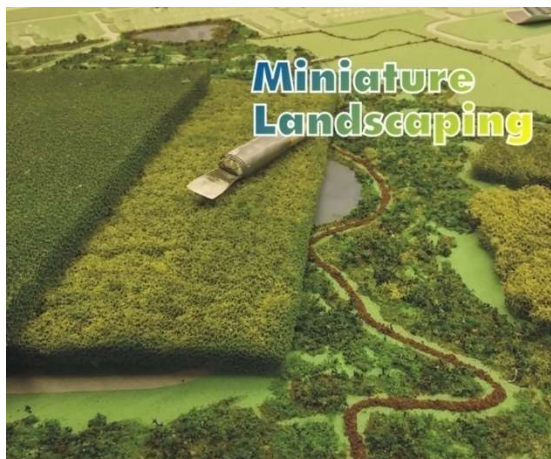
Dark Green coarse
#FM-FDG



Linden Green coarse
#FM-LGC



Multi Green-Mass planting
#FM-EMG



Model shown above is 1:500 scale

Foam landscape mat 1/4" or 3/8" thick, size: 6x12"
Colors: Evergreen EG & Linden Green LG Flexible, non-fading, non-drying. Great for creating quick gardens: scratch up the top surface to expose underlying color (<as shown in picture) Cut to size with scissors. For smaller scales use for corn fields or mass forested areas. **LSF-614 \$5.50 LSF-638 \$6.30**



#LSF-614EG 1/4"
#LSF-638EG 3/8"



#LSF-614LG
#LSF-638LG

Tree foliage: #4 loose coarse texture. Best suited for our TAC & D Tree frames. **Ground scatterings:** #4 fine soft texture for ground covering, basing etc. Various weights **\$4.95/bag**



LFS-4DD 30g



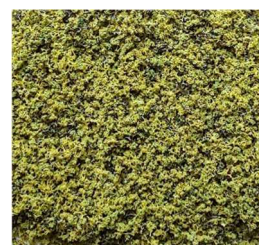
LFS-4LE 30g



LFT-4FG 28g



LFT-4ELG 25g



LFT-4BG 28g

Floral Foam Mats

Landscape mat with flowers on top. Easy to cut and glue down to your model base. A pack contains 1 each - Pink, Yellow & White 2.5"x10" ea. Variety of 1/4" & 1/2" thk. Great for flower beds & mass planting
\$7.95/pk #FFM-3



Mulch Foam Mat

Landscape mulch mat. Easy to cut and glue down to your model base. Dark brown. 4"x12" x 1/4" thick.
\$3.95 #MM-BR



Floral Garden Chunky Mats - 3/8"-3/4" thick variety in one pack, 3 pcs 2.5"x3.5" each. Flexible and easy to use: Pull apart pieces and glue down with hot glue. Great for creating quick gardens: Use for any scale. **\$7.95/pk**



FGM-1

FGM-2

FGM-3

FGM-1 Rose – Purple – White
FGM-2 Blue – Yellow – Red
FGM-3 Forest Green – Sugar Maple – Bright Green



Snow covered Spruce

5 1/2" tall snow covered spruce trees. Can be used for many scales. Wire trunk 3per bag
TSDF-15SC \$10.95



Econo trees – Plastic Autumn, Forest Green and bare trees



TD60AM 2" tall \$7.95/6
TD80AM 3" tall \$10.95/6
TD130AM 5" tall \$10.95/4



TD60FG 2" tall \$7.95/6
TD80FG 3" tall \$10.95/6
TD130FG 5" tall \$10.95/4



D60 2" tall \$3.95/10
D80 3" tall \$4.95/10
D130 5" tall \$5.95/10

Garden delight shrubs 1-3/4" tall, use alone or in a pot (pot not incl.) Cut to make 4 small plants. They are the same fluffy flowers as our GDB codes.



1:12 scale model

#GDS-1 (2ea. Pink-white-yellow) \$12.95/pk of 6
#GDS-2 (2ea. Pink-white-violet) \$12.95/pk of 6

Garden Delight Bushes

1-3/4" tall, use alone or in a pot. These have soft lightweight flowers on the same frame as our GDS'. 3 pcs per pack of one colour. **GDB-1() \$5.95**



1:48 scale model



Mini-Bond THICK

227ml (8oz)

Landscape adhesive. Non-Toxic and Water wash-up. Spread Mini-Bond on top of tree branches, wait 5-8 minutes then apply MBS Foliage or foliage mat. Dries Brown/grey in color to match MBS tree armatures.

#MBT-8B \$11.95



Red



White



Rose



Purple



Cherry Blossom



Yellow



Blue



Lilac



Autumn



Green



Fine Red



Fine Yellow



Cut to make 4 individual plants or even smaller for planters and small gardens.

Loose Grasses/Turf - Fine and Extra fine

40g bag - covers 295sq." Coverage depends on your desired density of grass. **\$4.95ea.**



Green Summer Grass
#LFG-5EG Fine grass
#LFG-4EG Coarse grass



Yellow Fall Grass/turf
#LFG-5YL Fine grass
#LFG-4YL Coarse grass



Tree Stumps 7/16" dia.

Use for many scales
Solid white styrene with details

#STUMP-48 4pc/pk \$3.95
Easy to finish w/acrylic paint.

Swimming Pool Use for 1:24 (G scale) or 1:12 Vacuum formed shell includes flagstone surround & 2 steps into pool. Pool is: 13 1/8" x 7 1/2" Total with flagstone is 22" x 12", 2" deep end and 1 3/8" shallow. Fill with water, Magic Water or Alumilite clear resin (44oz req) for a realistic look, comes with instructions.



< The picture to the left is a finished model. The one above is how the product comes in the package.
#SWIM-24 \$24.95

Bridge White plastic cast resin. Easy to paint. (painted bridge shown inset) 1 1/2" wide 3-7/8" long 1-3/4" tall 7/8" wall height. Can be used for small garden bridge in 1:24 or a larger bridge in 1:48 scale. #BRIG-24 \$11.95



1:24 scale person

1:48 scale

O Scale 1:48 Pond >>>

Vacuum formed sheet. Size: pond with rocks and flagstone surround is appx. 4"x5" x 1/2" deep. Fill with Magic Water or Alumilite clear resin for a realistic look. Comes with instructions. Easy to paint. #POND-48 \$8.35. Landscaping not included.



Potted Hyacinths
3 pots of hyacinths
1 of each color Pink, Yellow, Blue. Pot sizes are 5/8", 1/2" and 3/8" diameter.
#FLRP-1 \$8.25



Planter pots 1/2" and 3/4" dia.

Easy to plant with garden growies or mini squeeze me trees. White styrene. Use for scales 1:12, 1:24, 1:48 & 1:87



H1-01 3/4" planter ^ .95ea
H1-02 1/2" planter .95ea

POTF-24TR POTT-48TR



H3-01 3/4" planter ^ .95ea
H3-02 1/2" planter .95ea

POTF-24GY POTF-48GY



H4-01 3/4" planter ^ .95ea
H4-02 1/2" planter .95ea

POTF-24BK POTF-48BK



H6-03 7/16" planter .95 ea

H6-04 5/16" Planter .95ea
Not shown.

Also available Finished as < shown. See below for codes POT__ Flowers or Tree \$5.50ea

Finished planted pots with flowers (POTF-) or tree (POTT-) - 24 is 3/4" dia. 48 is 1/2" dia pot

TR=Terracotta pot colour & style GY=Grey pot colour & style
flowers POTF-24TR POTF-48TR POTF-24GY POTF-48GY
tree- POTT-24TR POTT-48TR POTT-24GY POTT-48GY

BK=Black pot colour & style
POTF-24BK POTF-48BK
POTT-24BK POTT-48BK

Patterned sheets 1:24 4 new patterns, great for the garden railway modelers and miniaturists.

7"x24" 1pc **\$8.95** 7"x12" 1pc **\$4.49** All sheets are beige (CG). Shown painted on right half of pictures



#COB-27x12" Cobblestone



#CBL-2 7x24" Castle block



#FLG-2 7x24" Flagstone



#LOG-2 7x24" Log siding

Patterned sheets 1:87 HO and 1:160 N Scale

7x12" (175x300mm) **\$4.49**

Castle stone use for O or HO

#CBL-487

Wood shake roof 1:160 N

#WSRS-160

Spanish roof w/ridge 1:160 N 6"x8-3/4" #SRT-160



CBL-487

WSRS-160

SRT-160

Pre-finished Patterned Sheets-Ready to use

1:48 (MF4- #) and 1:24 (MF2- #)

Sheets are 7x12" (175x300mm) unless noted. 7x12" **\$5.95** 7x24" **\$13.95**



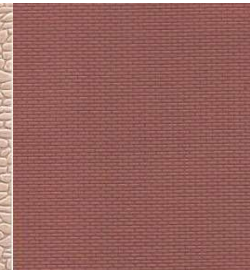
MF2-22
Cobblestone



MF2-71 7X24
Spanish roof



MF4-01
Fieldstone



MF4-05
Brick



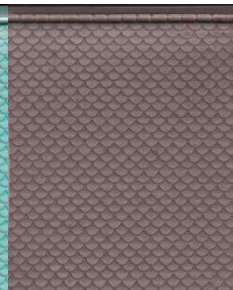
MF4-08
Brick



MF4-11 7X24"
Asphalt



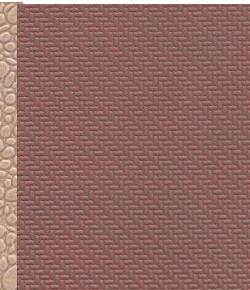
MF4-16
Fishscale roof



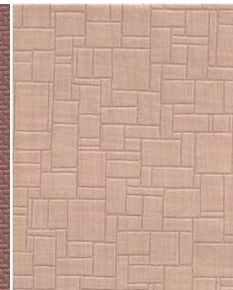
MF4-17
Fishscale roof



MF4-21
Pebblestone



MF4-26
Interlocking



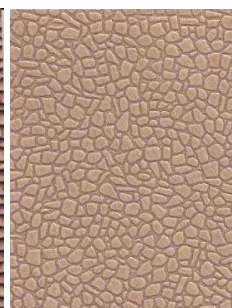
MF4-29
Stone Flooring



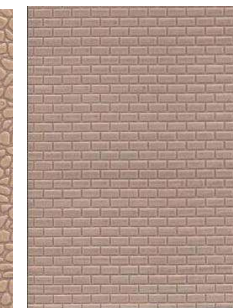
MF4-31
Board & Bat.



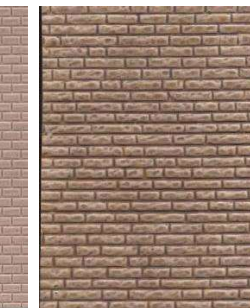
MF4-35
Woodshk. roof



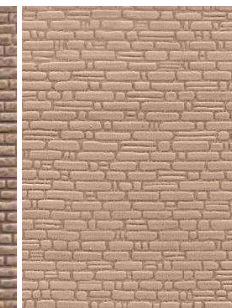
MF4-38
Flagstone



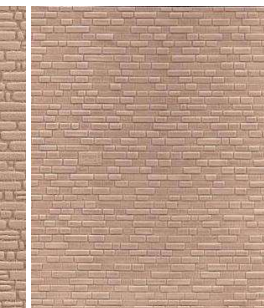
MF4-40
Block



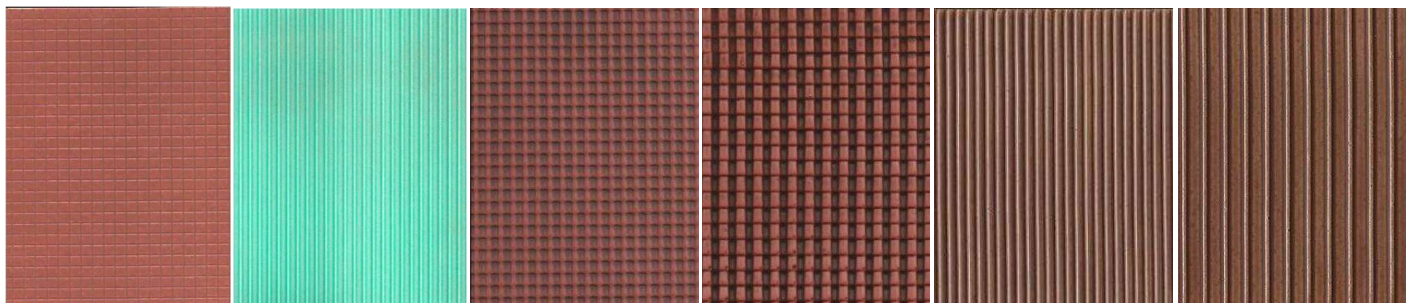
MF4-41 ALSO 1:24
Large stone



MF4-43
Irregular stone



MF4-44
Dressed Stone



MF4-45 Terracotta tile MF4-50 Verdigris roof 1/4" MF4-70 Clay roof MF4-71 7X24" Spanish roof MF4-80 Wood siding 1/8" MF4-81 Wood siding 1/4"

Peel & Stick patterned paper sheets 11"x16" some tiles have a boarder and smaller accent tiles. 1:12 or 1:24



F06-05 Honey Pine floor
1/4" planking



F06-11 Oak floor
1/4" wide planking



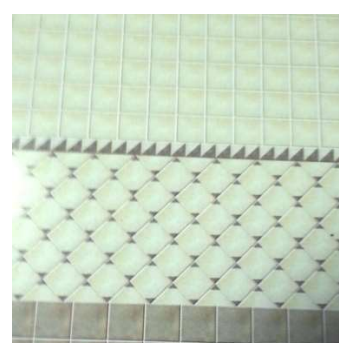
F06-23 Grey/green tile
9/32" & 3/16" sq.w/trim



F06-27 Pale Yellow tile
5/16" & 1/4" sq. w/trim



F06-33 Cream/Gold tile
5/16, 3/16 & 1/16" w/trim



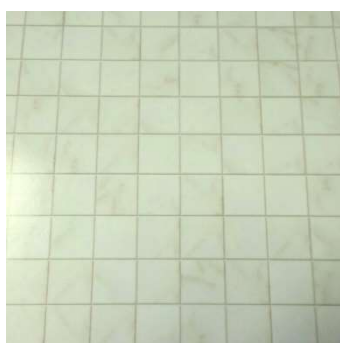
F06-35 Taupe tile
5/16 & 9/16" sq. w/trim



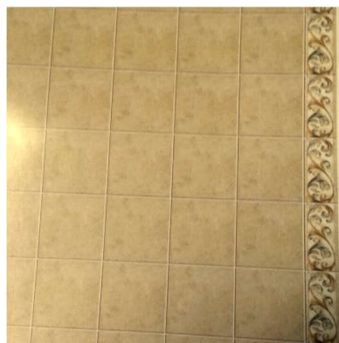
F06-36 Blue tile
5/16 & 9/32" sq. w/trim



F06-39 Cream/gold tile
11/32 & 5/16" sq.w/trim



F06-40 White marble
1/2" sq. tile



F06-52 Beige/pink tile
3/4" tile w/outer trim



F06-55 Beige tile
23/32" tile

Cut with scissors or a craft knife, peel back a portion of the sheet and using a ruler, start to squeegee the sheet as you peel the rest of the backing off. Best suited for a smooth substrate. 11"x16"
\$4.25

1:24 Accessories



WASH-24 \$3.74
Polyethylene



CHIC-24 12pc \$6.33
Polyethylene



BAR-24 24pc set \$10.75
Polyethylene



SOFA-24 7pc \$9.95
brown polyethylene



TBLR-24 side table \$3.95
7/8" T x 1" W. White



APPL-24RF \$14.95
Cast resin 2" t x 1-1/4" w



PES-24SP 6pc \$14.95
skin color styrene



HENT-24 3pc Wall unit \$6.95
white styrene (TV sold sep.)
HFTV-24 Flat screen TV \$6.83



HLS-24 3pc set \$9.95
minor assembly required
white styrene, easy to paint



HJ25-01 \$3.95 standard tub
White styrene, style may vary



HJ25-06 \$3.95 corner tub
White styrene



HJ25-02 toilet \$2.50
White styrene
HJ25-03 sink w/faucet \$2.50 ea



HJ25-04 \$3.95 vanity
White styrene w/faucet
shown painted

Chair and buffet are white styrene.

These 4 items are cast resin and can be painted with acrylic paint.

Not shown actual size



HC25-03 2pc \$5.95
Chair assembly req.



HB25-40 \$9.95
Buffet hutch
2 1/2" tall



FIRPO-24 \$14.95
Fireplace
4" tall



FIRP-24 \$11.95
Fireplace with
block back 2" tall



PILL-24S \$7.95
Fence Pillar
1 7/8" tall



WSTN-24 \$9.95
Stone wall insert
1 1/4" tall

1:48 (code ending 48), 1:100 (code ending 100) & 1:87 (code ending 87) Accessories – Colored



BAR-48 set \$7.95



BEAR-48 3pc \$ 6.61



CAML-48 \$8.95 CAML-87 \$6.61



White

SHEEP-48 5pc \$6.61



PIG-48 6pc \$6.61



SATE-48 \$14.95

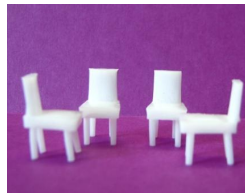


Urinals

URNL-48 6pc \$3.95



WASH-48 \$3.39



CHAIR-48 4pc \$4.54

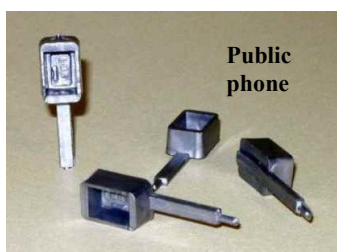


CHIC-48 24 chickens \$5.55



People sold separately

**MACH-48 7mach.&10 motors \$11.88
PFI-48WK workers 6pc \$16.46**



Public phone

PHONP-48 4pc \$5.69



PFI-48A 4pc + barbell \$14.31



**SNOW-48 \$.50
1-1/2" tall**



**PFI-48SOC 6pc \$16.46
Sports people**



**PES-48SP 10pc \$5.50
sitting & standing
HO 1:87 sit 12pc PES-87SI
HO 1:87 Stand 12pc PES-87ST**



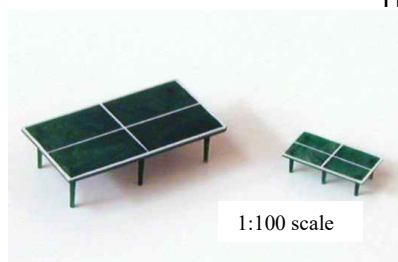
**HLH3-48 3pc set
styrene \$4.95/set**



**BASK-48 \$6.60
2 nets, 2 balls**



**TBLP-48 \$5.18
picnic, req. assembly**

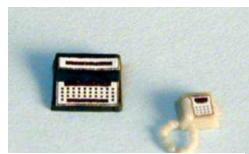


1:100 scale

PING-48 \$6.00 PING-100 \$5.35



POOL-48 \$5.28



5 typewriters, 5 phones

PHON-48 \$5.69



ZOO-87 HO/1:87 16pc \$11.95



Scale Cars - HO 1:87, 1:75 & N/Z 1:200

Plastic cars. Very realistic, nice colors, tinted windows.

1:75 – actual size 6.5cm (2 ½") **5pc \$5.95**

HO 1:87 – actual size is 5cm (2") **5pc \$4.95**

N/Z 1:200 - these cars sit right between scales N & Z.

Actual size 22-25mm (approx. 7/8"-1") **10pc \$5.95**

Brass Chain

Use for scales 1:48 or bigger where representation of large chain is required.

24 links per inch. 36" per pkg. **#BC-20 \$4.50**

Decorative Fences use for O 1:48 or HO 1:87



FENCES – Decorative fences with pillars, made from white styrene (easy to paint). 39" total length per pack, comes in sections that can be attached together end to end or by corners (see pic inset). Pillars are 1 3/16" tall in the 48 series and 5/8" tall in the 87 series

Scales: FEN-4801 in 1:48 would be 4'9" tall, in 1:87 it would be 8'9" tall, in 1:24 it would be 2' tall

Code: FEN-4801 (top pic) FEN-4803 (bottom pic) \$15.95 ea.

Also available in 1:87 Code: FEN-8701 (top pic) \$14.95 ea

We're always creating new products, so check out the website to see what's new and follow us on :



For How to demos and photos